

## Diversity Data on Faculty Members and Full-Time Undergraduates

### Fall 2020

When reporting campus population data to the federal government, institutions must use a set of categories that blend race, ethnicity, and citizenship. For example, non-U.S. citizens are reported as such, regardless of their race/ethnicity. The tables below show those figures as well as the ones that result when we count our non-U.S.-citizen students and faculty members by their race/ethnicities. These methods of counting yield two different measures of student and faculty diversity, neither of which is necessarily more accurate. For some purposes, we are interested in knowing our percentage of U.S. students and faculty of color, and for other purposes, we want to know about people of color in general. (Note that students and faculty members counted as U.S. citizens include foreign-born, naturalized citizens; permanent residents; and dual citizens.)

#### FALL 2020 FULL-TIME FACULTY MEMBERS

	ONLY U.S. CITIZENS COUNTED BY RACE/ETHNICITY		ALL FACULTY COUNTED BY RACE/ETHNICITY	
	#	%	#	%
American Indian or Alaska Native	0	0.0%	0	0.0%
Asian	16	9.1%	24	13.6%
Black or African American	9	5.1%	11	6.3%
Hispanic or Latino	11	6.3%	11	6.3%
Native Hawaiian or Other Pacific Islander	0	0.0%	0	0.0%
Two or more races	0	0.0%	0	0.0%
White	122	69.3%	130	73.9%
Race unreported	0	0.0%	0	0.0%
Non-U.S. citizens	18	10.2%		
<b>TOTALS</b>	<b>176</b>	<b>100.0%</b>	<b>176</b>	<b>100.0%</b>

% U.S. citizen faculty of color	20.5%
% faculty of color	26.1%

Source: Office of Institutional Research tallies using Common Data Set guidelines

#### FALL 2020 FULL-TIME UNDERGRADUATES

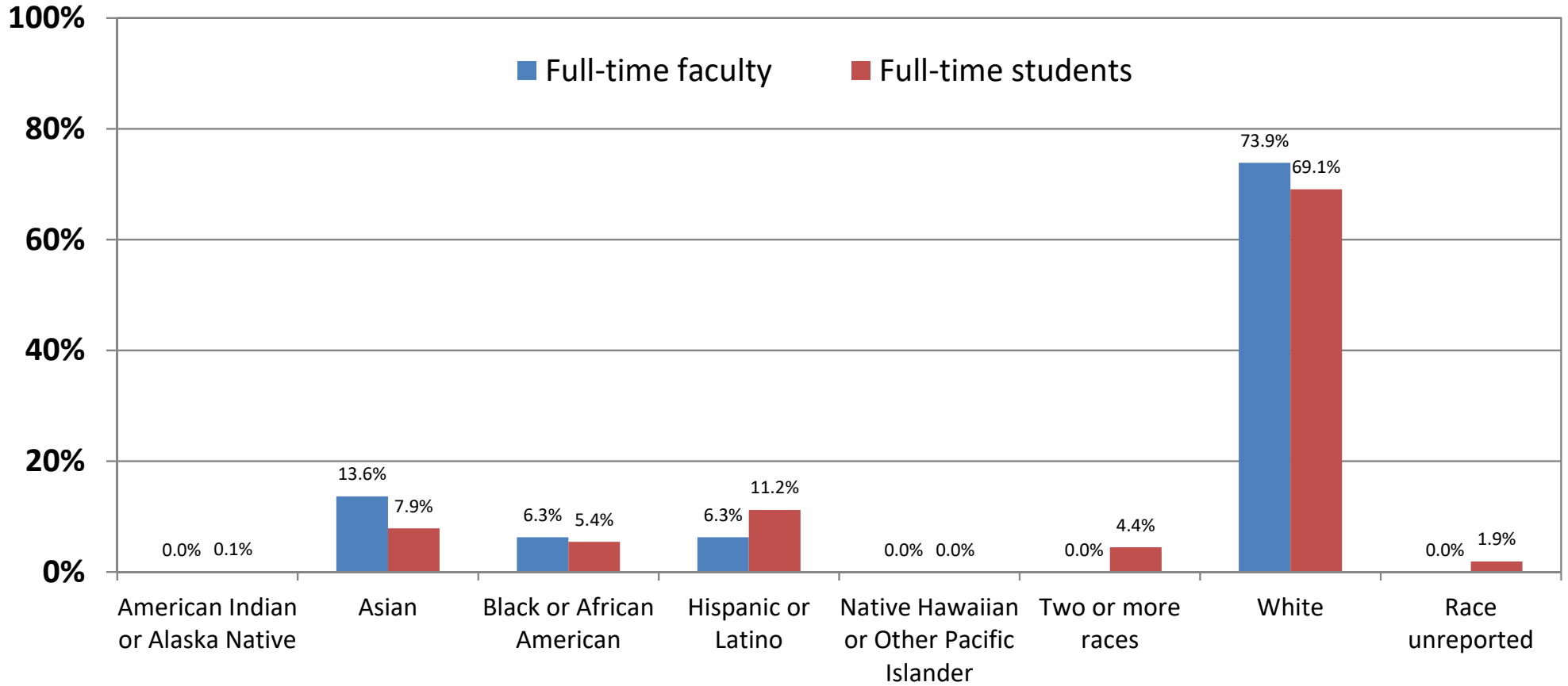
	ONLY U.S. CITIZENS COUNTED BY RACE/ETHNICITY		ALL STUDENTS COUNTED BY RACE/ETHNICITY	
	#	%	#	%
American Indian or Alaska Native	1	0.1%	1	0.1%
Asian	67	4.0%	133	7.9%
Black or African American	75	4.4%	92	5.4%
Hispanic or Latino	178	10.5%	189	11.2%
Native Hawaiian or Other Pacific Islander	0	0.0%	0	0.0%
Two or more races	69	4.1%	75	4.4%
White	1,138	67.4%	1,167	69.1%
Race unreported	23	1.4%	32	1.9%
Non-U.S. citizens	138	8.2%		
<b>TOTALS</b>	<b>1,689</b>	<b>100.0%</b>	<b>1,689</b>	<b>100.0%</b>

% U.S. citizen students of color	23.1%
% students of color	29.0%

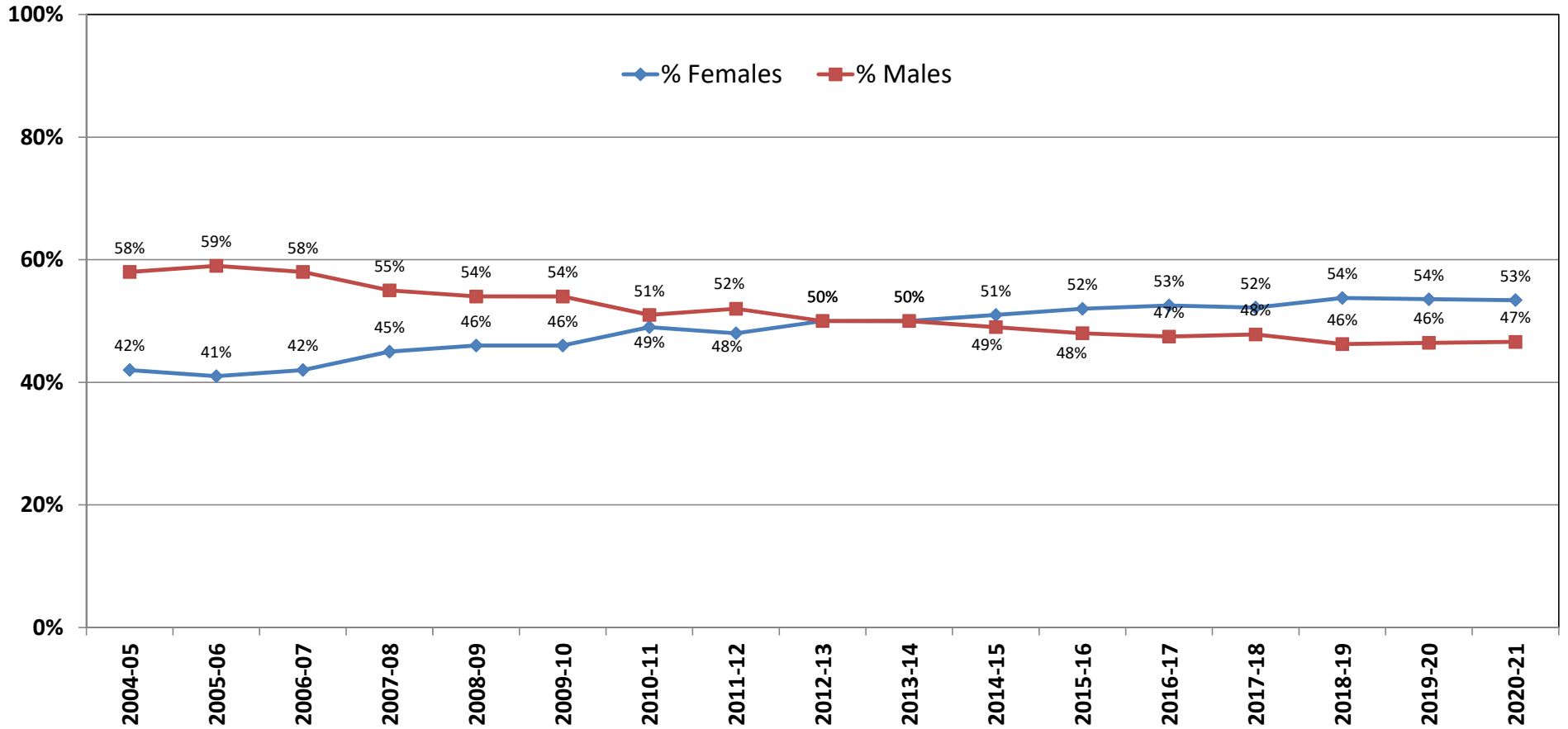
Source: Office of the Registrar, IPEDS Fall Enrollment Survey 2020

# Fall 2020 Full-Time Faculty Members' and Students' Race/Ethnicity

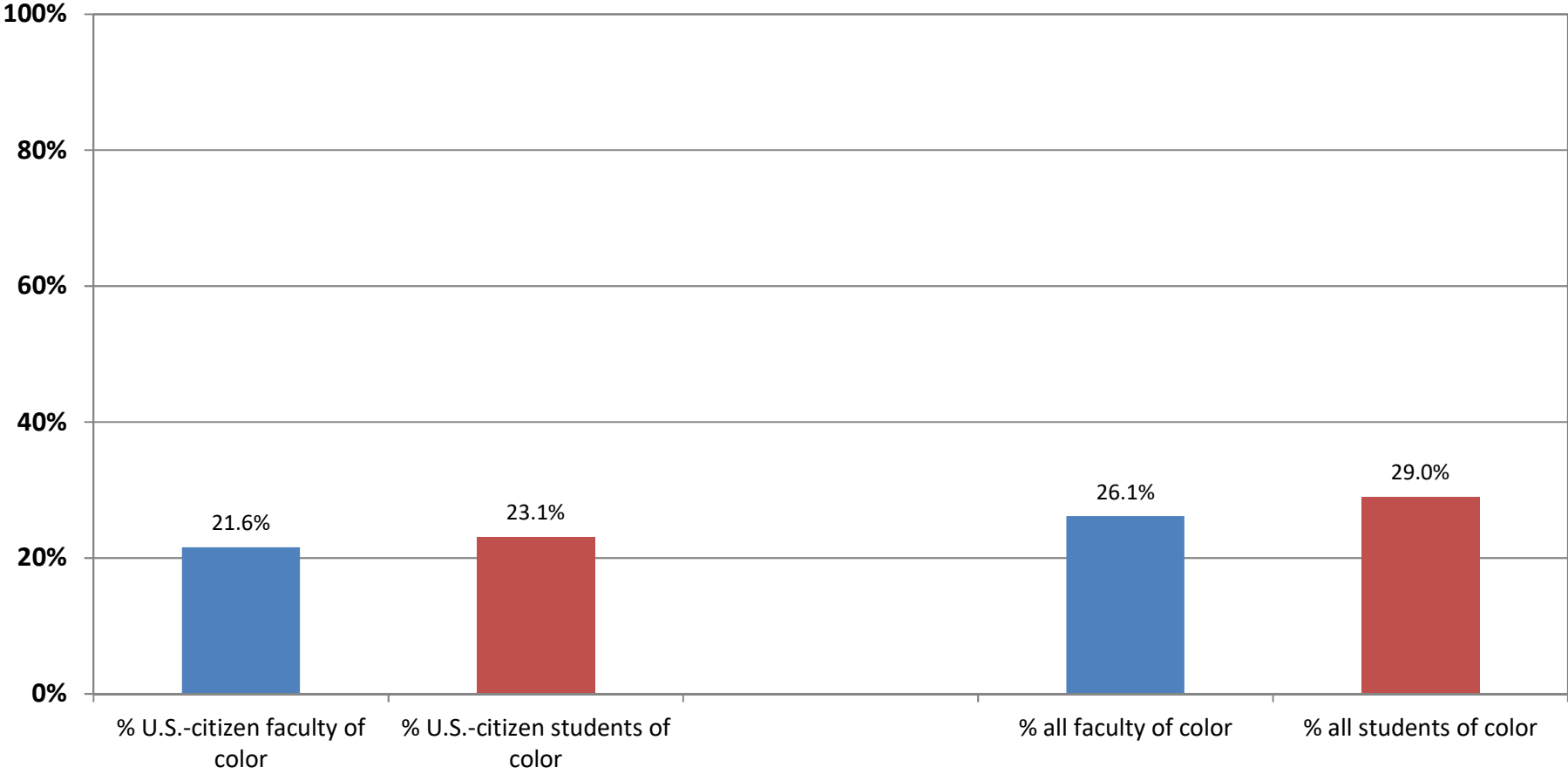
*Non-U.S.-citizen faculty members and students counted here by their race/ethnicity*



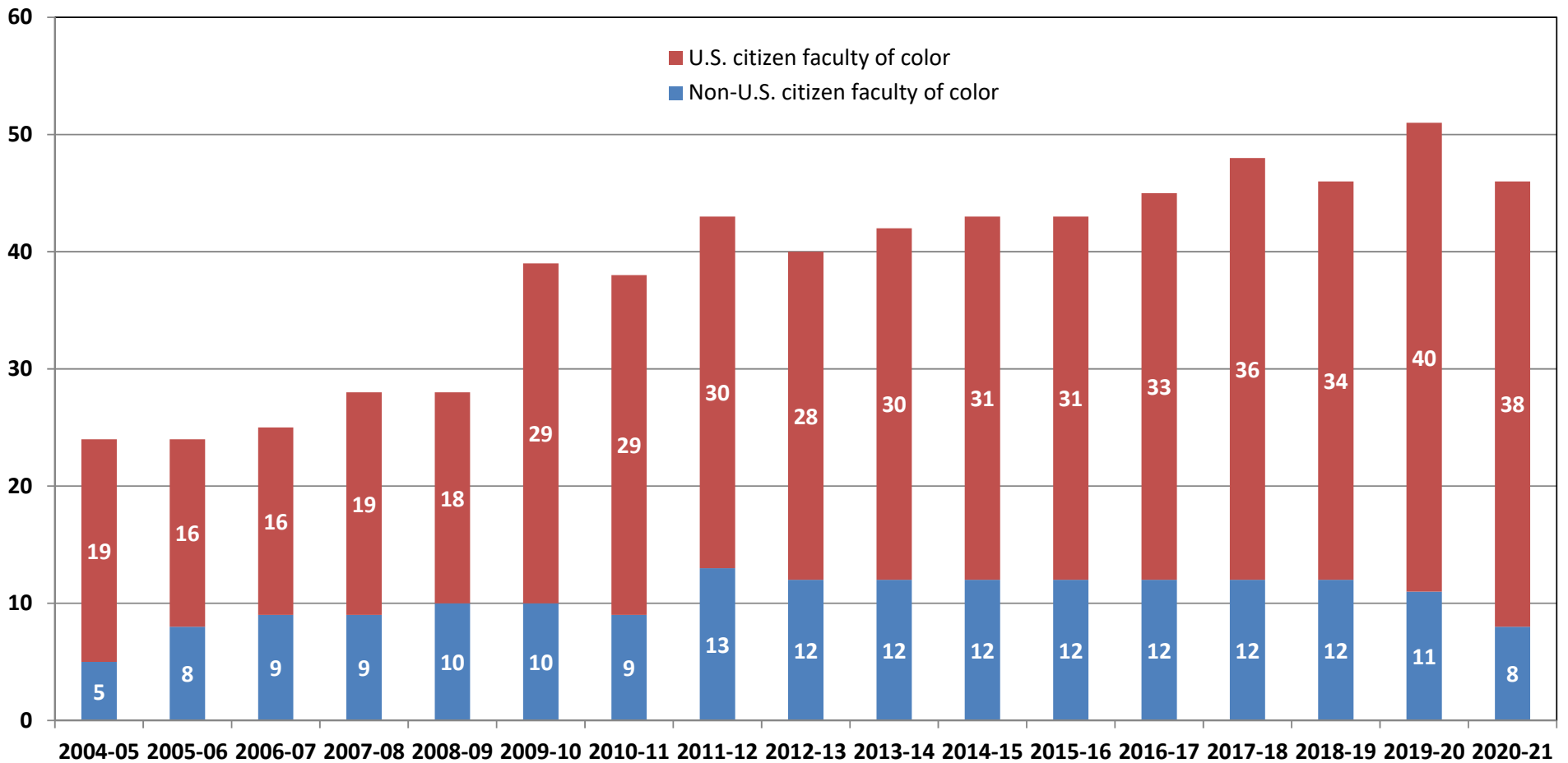
## Gender Composition of Connecticut College's Full-Time Faculty, 2004-05 to 2020-21



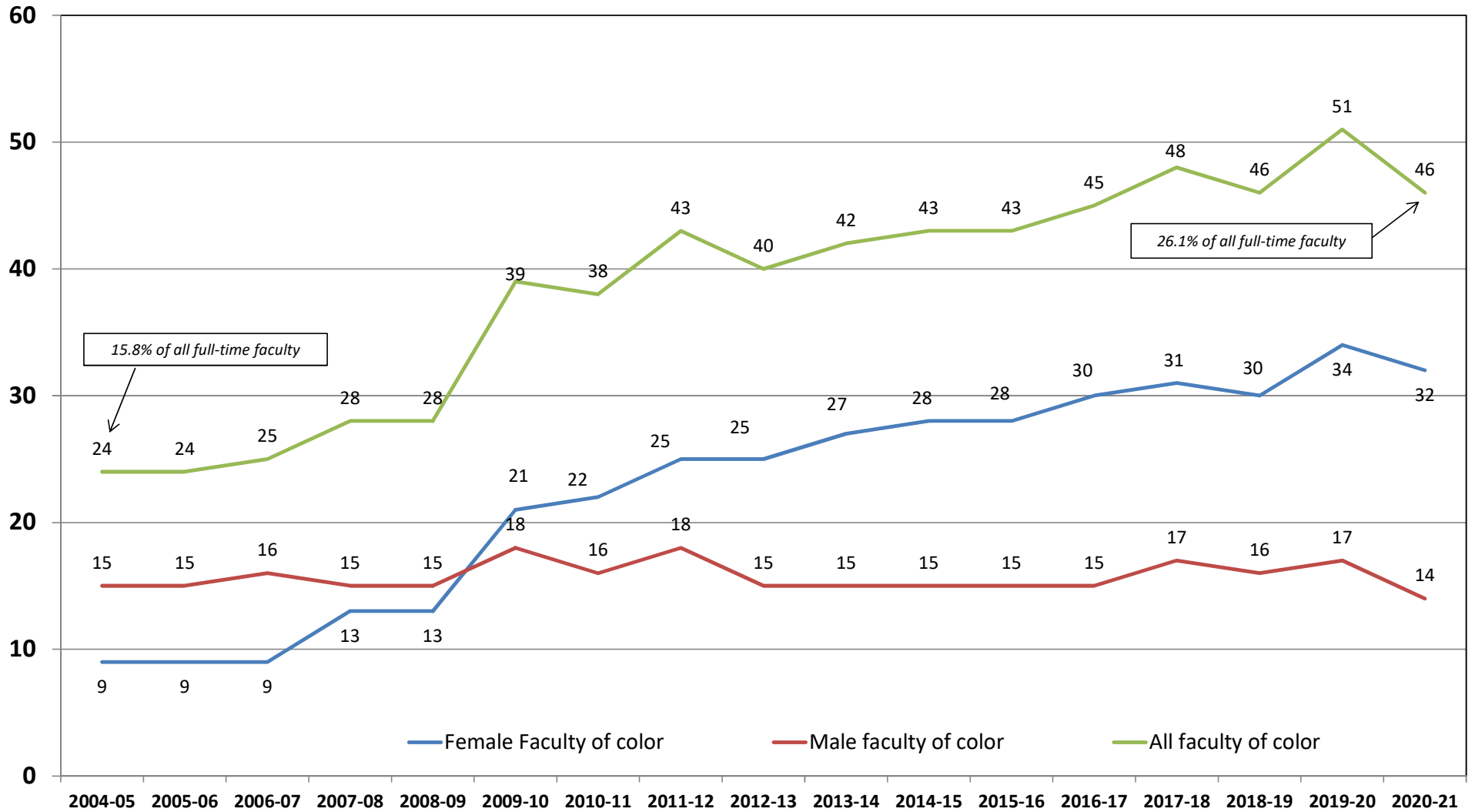
# Fall 2020 Faculty and Students of Color



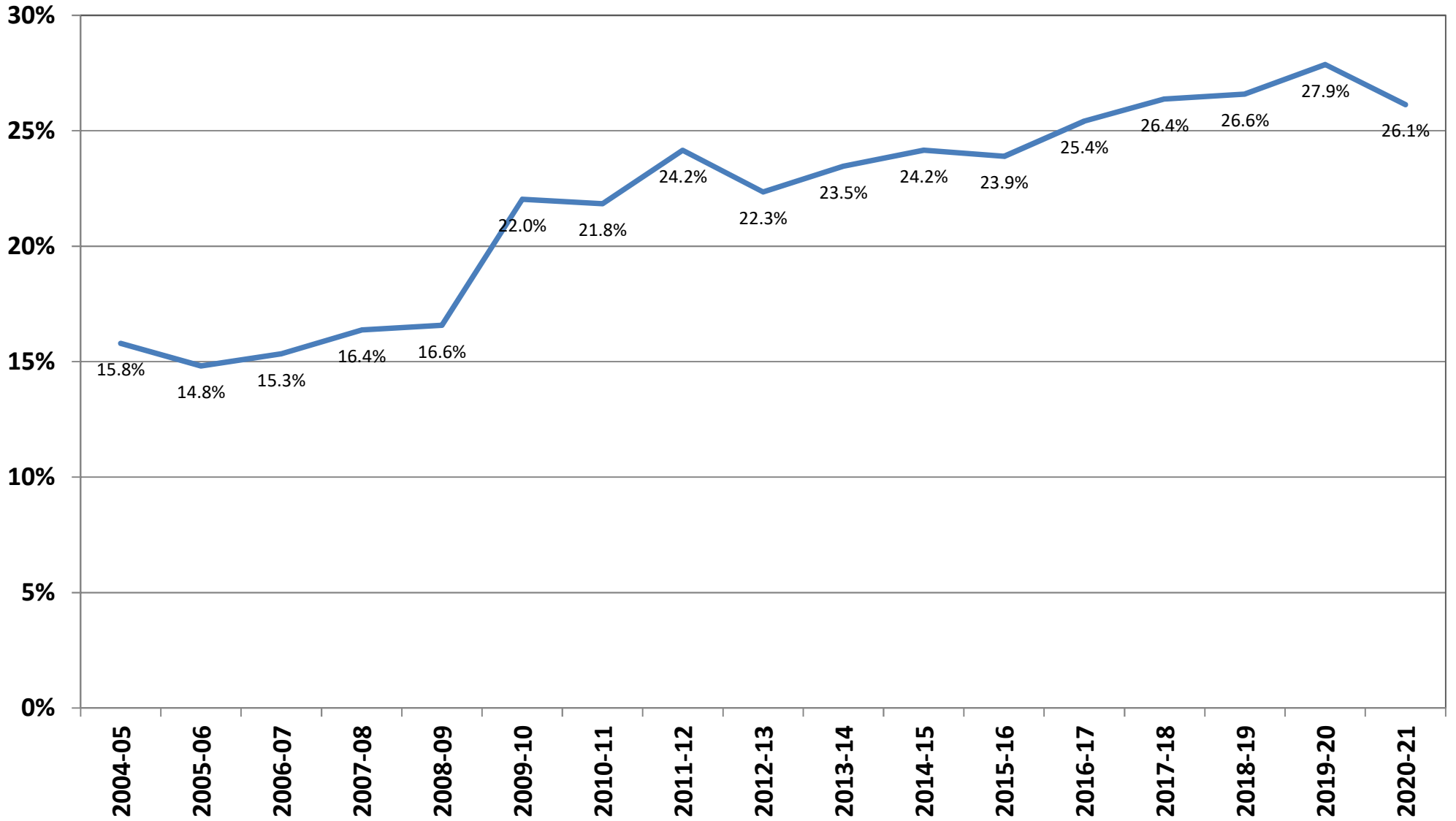
## Connecticut College Faculty of Color, AY 2004-05 to Present



## # Faculty of Color by Gender, Fall 2004-Fall 2020

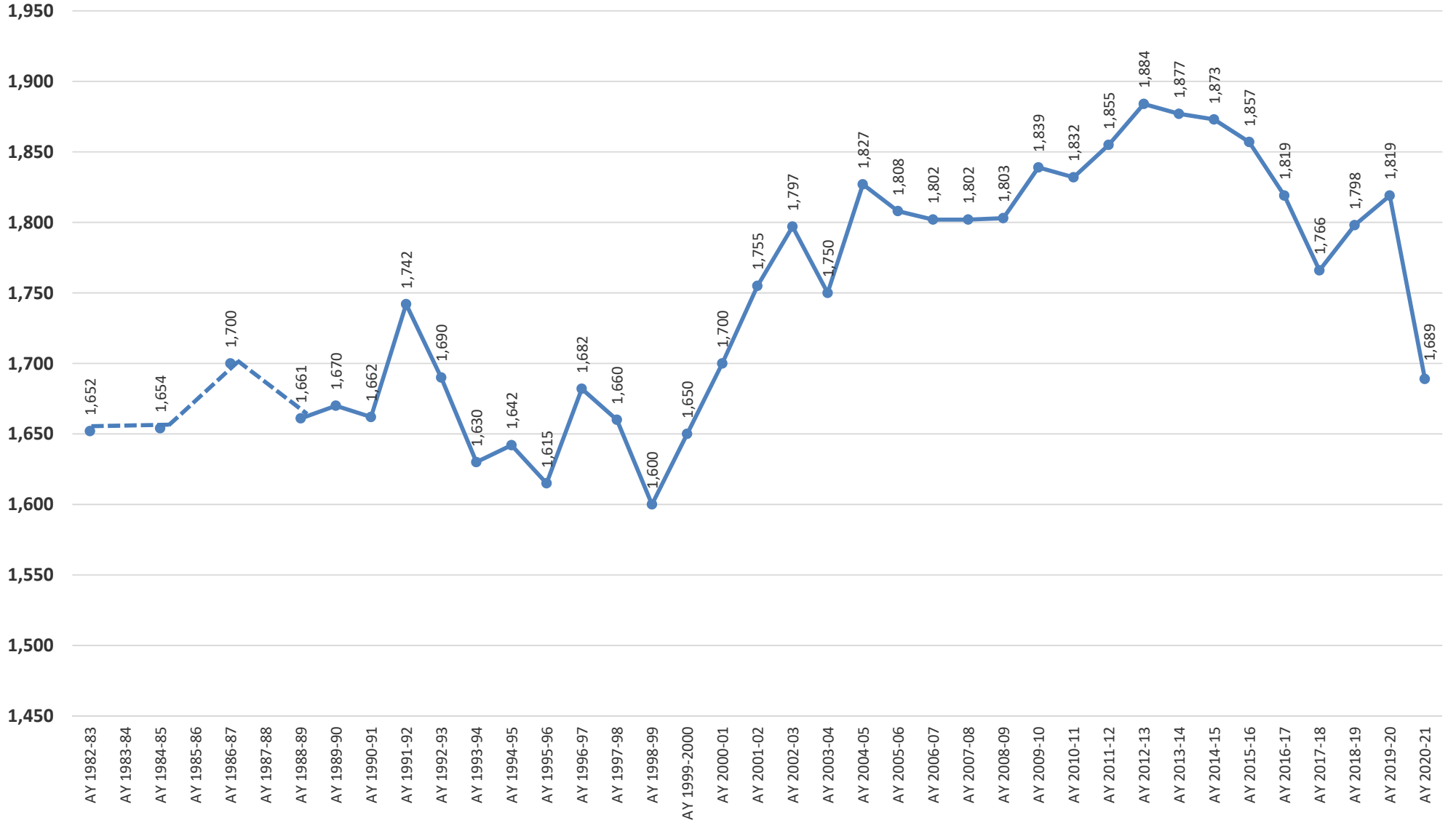


## Percentage of Full-Time Faculty who are Persons of Color, Fall 2004 to Fall 2020



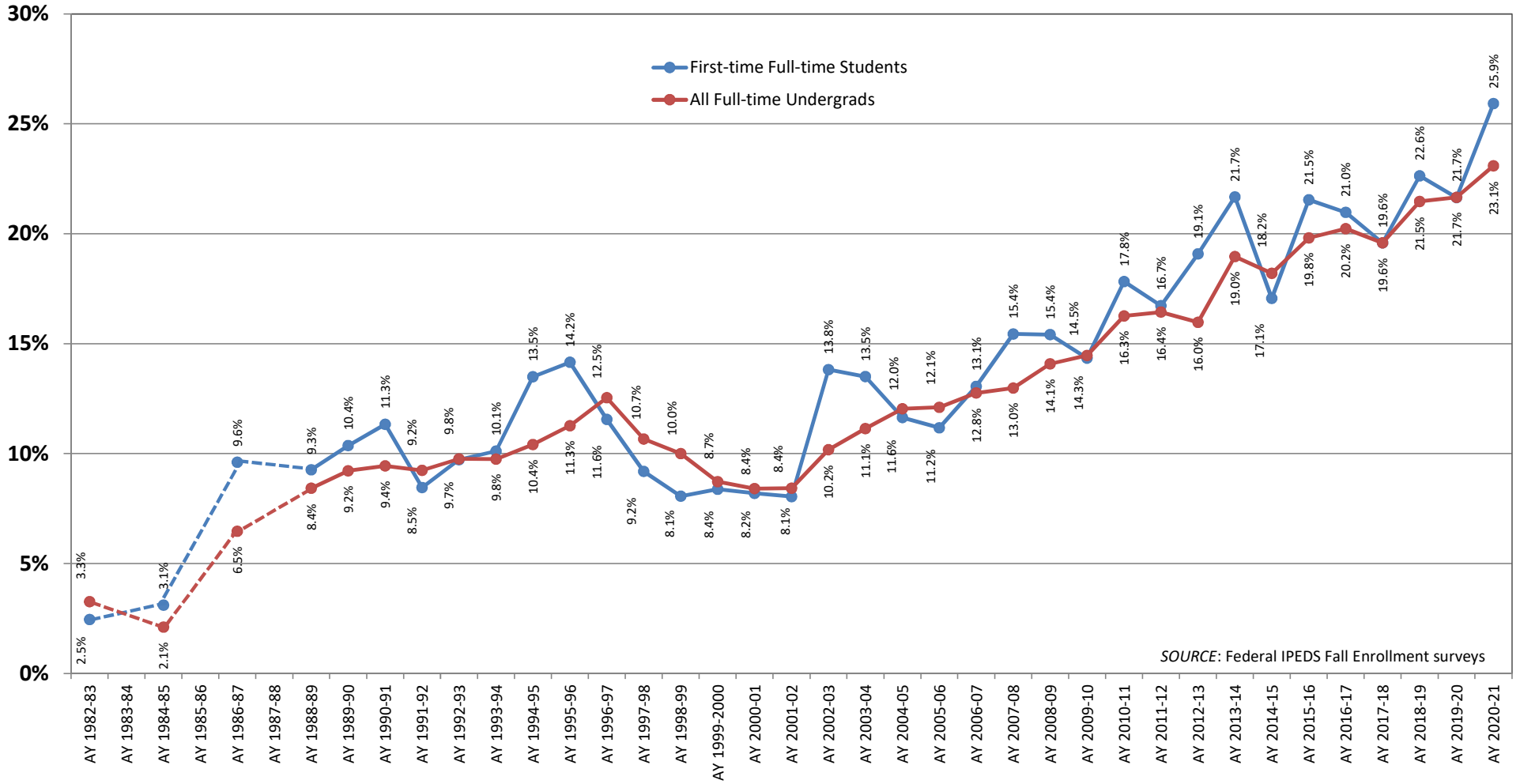
# Connecticut College Full-Time Undergraduates

(Source: IPEDS Fall Enrollment Surveys)

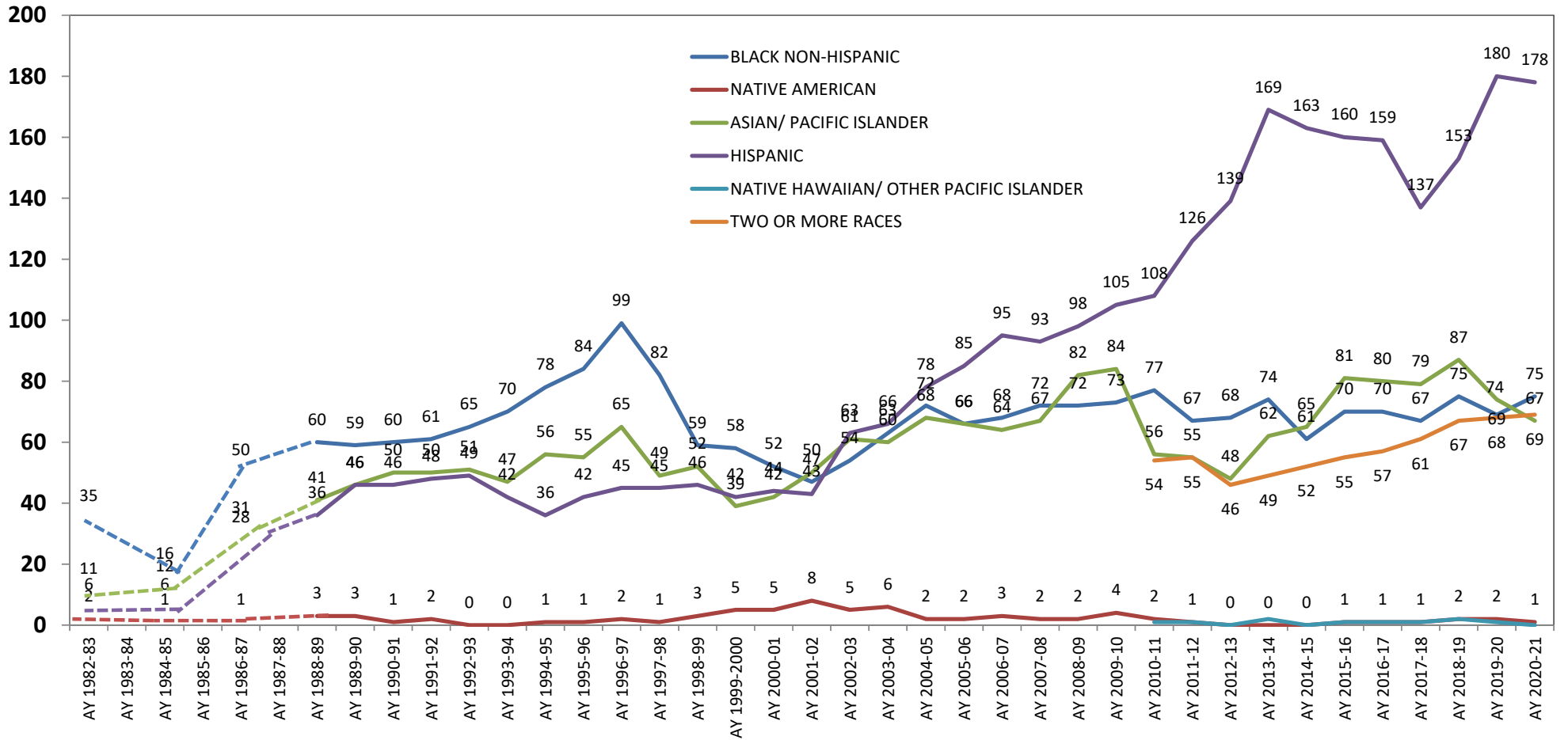




## Historical Percentage of U.S. Students of Color, Fall 1982 to Fall 2020



## Numbers of Full-Time Undergraduate U.S. Students of Color



## Connecticut College Full-Time Undergraduate Enrollments, Fall 1982 to Fall 2020

